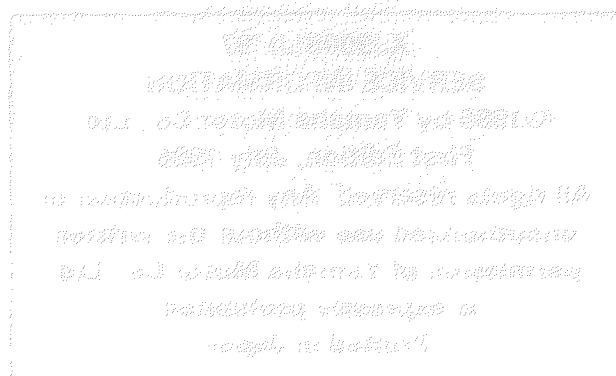


# YAMAHA

# XJ900S(J)'97

4KM-SE3

## SERVICE INFORMATION



---

## FOREWORD

This Service Information has been prepared to introduce new service and data for the XJ900S(J) '97. For complete service information procedures it is necessary to use this publication together with the following microfiche service manual.

**XJ900S(J) '97 SERVICE MANUAL: 4KM-ME3**  
**XJ900S(G) '95 SERVICE INFORMATION: 4KM-SE1**  
**XJ900S(H) '96 SERVICE INFORMATION: 4KM-SE2**

**XJ900S(J) '97**  
**SERVICE INFORMATION**  
**©1996 by Yamaha Motor Co., Ltd.**  
**First Edition, July 1996**  
**All rights reserved. Any reproduction or**  
**unauthorized use without the written**  
**permission of Yamaha Motor Co., Ltd.**  
**is expressly prohibited.**  
**Printed in Japan**

## NOTICE

This manual was written by the Yamaha Motor Company primarily for use by Yamaha dealers and their qualified mechanics. It is not possible to put an entire mechanic's education into one manual, so it is assumed that persons using this book to perform maintenance and repairs on Yamaha motorcycles have a basic understanding of the mechanical concepts and procedures inherent in motorcycle repair technology. Without such knowledge, attempted repairs or service to this model may render it unfit to use and/or unsafe.

Yamaha Motor Company, Ltd. is continually striving to improve all models manufactured by Yamaha. Modifications and significant changes in specifications or procedures will be forwarded to all Authorized Yamaha dealers and will, where applicable, appear in future editions of this manual.

## HOW TO USE THIS MANUAL

### PARTICULARLY IMPORTANT INFORMATION

This material is distinguished by the following notation.



The Safety Alert Symbol means ATTENTION! BECOME ALERT! YOUR SAFETY IS INVOLVED!

#### WARNING

Failure to follow WARNING instructions could result in severe injury or death to the motorcycle operator, a bystander, or a person inspecting or repairing the motorcycle.

#### CAUTION

A CAUTION indicates special precautions that must be taken to avoid damage to the motorcycle.

#### NOTE:

A NOTE provides key information to make procedures easier or clearer.

### MANUAL FORMAT

All of the procedures in this manual are organized in a sequential, step-by-step format. The information has been compiled to provide the mechanic with an easy to read, handy reference that contains comprehensive explanations of all disassembly, repair, and assembly, inspection operations.

In this revised format, the condition of a faulty component will precede an arrow symbol and the course of action required will follow the symbol, e.g.,

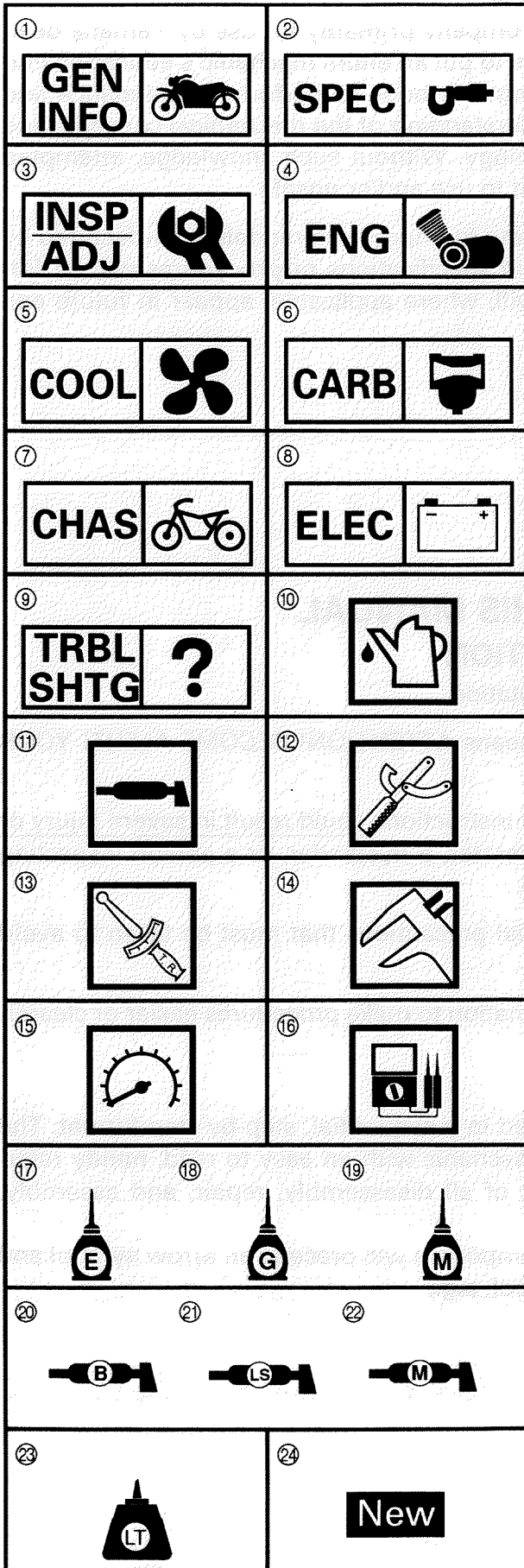
#### • Bearings

Pitting/Damage → Replace.

## ILLUSTRATED SYMBOLS

Illustrated symbols ① to ⑨ are printed on the top right of each page and indicate the subject of each chapter.

- ① General information
- ② Specifications
- ③ Periodic inspections and adjustments
- ④ Engine
- ⑤ Cooling system
- ⑥ Carburetion
- ⑦ Chassis
- ⑧ Electrical
- ⑨ Troubleshooting



Illustrated symbols ⑩ to ⑯ are used to identify the specifications appearing in the text.

- ⑩ Filling fluid
- ⑪ Lubricant
- ⑫ Special tool
- ⑬ Torque
- ⑭ Wear limit, clearance
- ⑮ Engine speed
- ⑯  $\Omega$ , V, A

Illustrated symbols ⑰ to ㉒ in the exploded diagrams indicate the types of lubricants and lubrication points.

- ⑰ Apply engine oil
- ⑱ Apply gear oil
- ⑲ Apply molybdenum disulfide oil
- ⑳ Apply wheel bearing grease
- ㉑ Apply lightweight lithium-soap base grease
- ㉒ Apply molybdenum disulfide grease

Illustrated symbols ㉓ to ㉔ in the exploded diagrams indicate where to apply a locking agent ㉓ and when to install a new part ㉔.

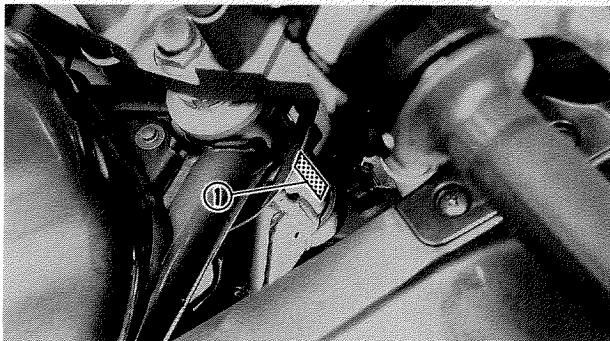
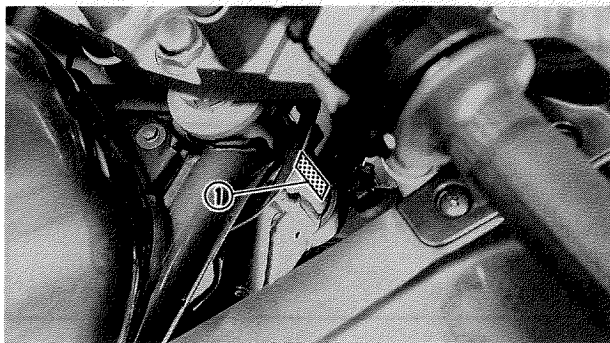
- ㉓ Apply the locking agent (LOCTITE®)
- ㉔ Replace

---

# CONTENTS

<b>GENERAL INFORMATION .....</b>	<b>1</b>
MOTORCYCLE IDENTIFICATION .....	1
VEHICLE IDENTIFICATION NUMBER (for E and AUS) .....	1
FRAME SERIAL NUMBER (except for E and AUS) .....	1
ENGINE SERIAL NUMBER .....	1
MODEL LABEL.....	1
 <b>SPECIFICATIONS .....</b>	<b>2</b>
GENERAL SPECIFICATIONS .....	2
MAINTENANCE SPECIFICATIONS .....	3
CHASSIS .....	3
CABLE ROUTING .....	4

## **XJ900S '97 WIRING DIAGRAM (For Europe)**



EB100000

## GENERAL INFORMATION MOTORCYCLE IDENTIFICATION

### VEHICLE IDENTIFICATION NUMBER

(for E and AUS)

The vehicle identification number ① is stamped into the right side of the steering head.

#### NOTE:

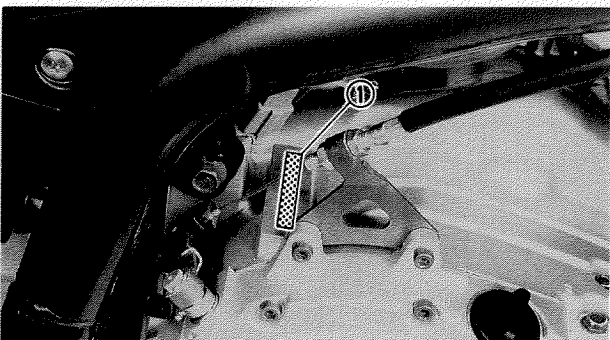
The vehicle identification number is used to identify your motorcycle and may be used to register your motorcycle with the licensing authority.

EB100020

### FRAME SERIAL NUMBER

(except for E and AUS)

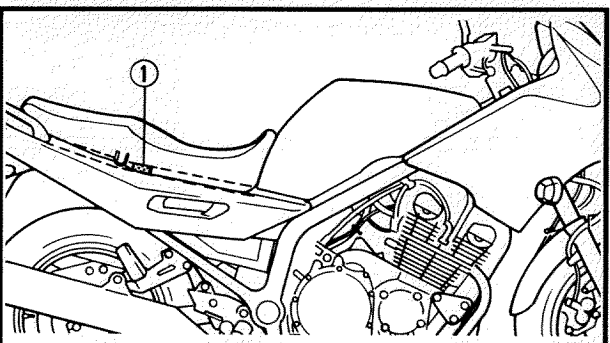
The frame serial number ① is stamped into the right side of the steering head.



EB100030

### ENGINE SERIAL NUMBER

The engine serial number ① is stamped into the crankcase.



### MODEL LABEL

The model label ① is affixed to the frame. This information will be needed to order spare parts.

# GENERAL SPECIFICATIONS

SPEC



## SPECIFICATIONS

### GENERAL SPECIFICATIONS

Model	XJ900S
Model code:	4KM5 4KM6 (E) 4PR3 (CH, A) 4PS3 (AUS)



# MAINTENANCE SPECIFICATIONS

## CHASSIS

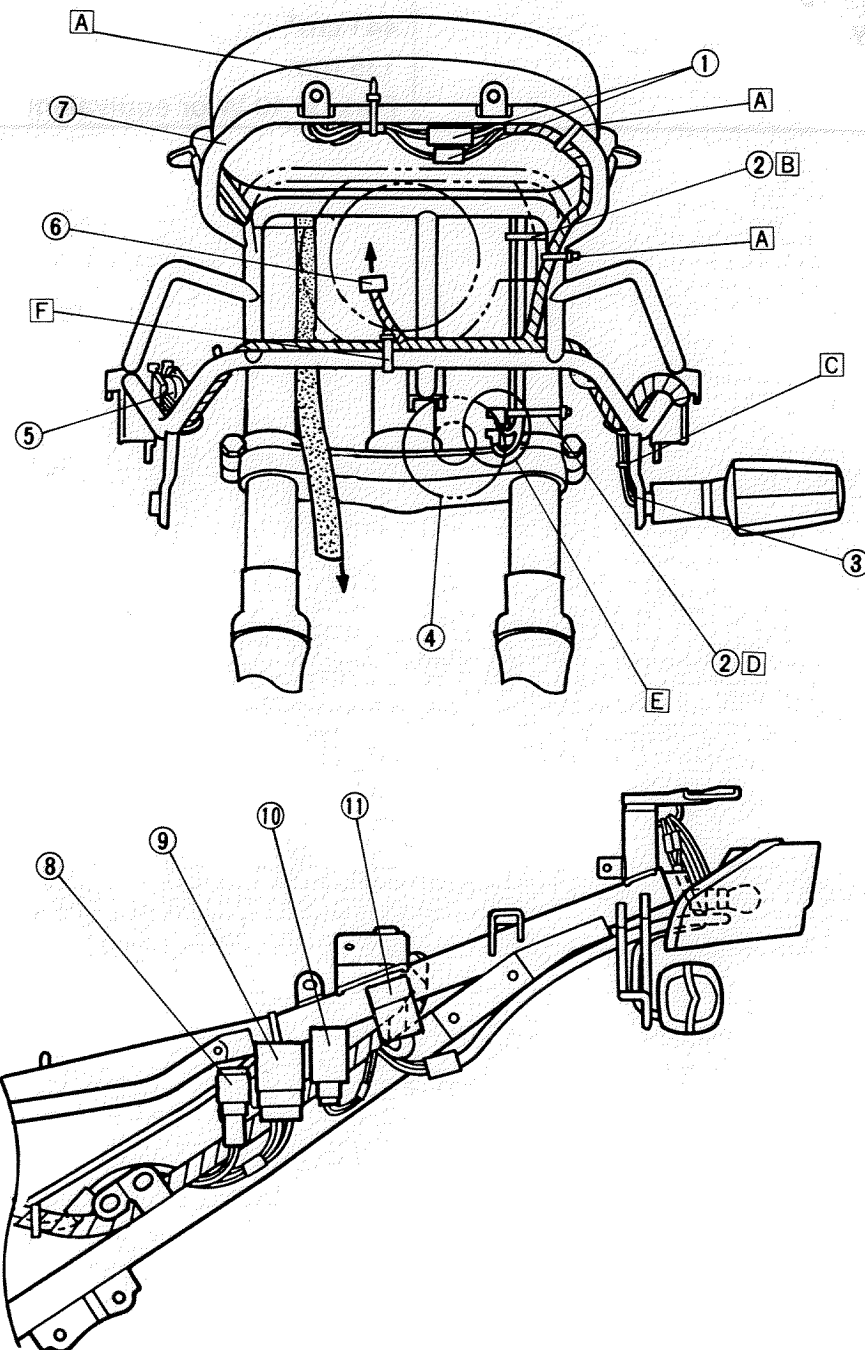
Model	XJ900S
Front suspension:	
Front fork travel	140 mm
Fork spring free length	399.5 mm
Spring rate (K1)	9 N/mm (0.9 kg/mm)
(K2)	14 N/mm (1.4 kg/mm)
Stroke (K1)	0 ~ 100 mm
(K2)	100 ~ 140 mm
Optional spring	No
Oil capacity	441 cm <sup>3</sup>
Oil level	135 mm
Oil grade	Fork oil 10 W or equivalent





## CABLE ROUTING

- |                          |   |
|--------------------------|---|
| ① Meter assembly coupler | A Clamp the meter lead to the cowling stay.   |
| ② Band                   | B Clamp the horn lead to the inner fork tube 60 mm from the handle crown.   |
| ③ Flasher lead           | C Pass the left and right flasher leads through the cowling stay guide wire.  |
| ④ Horn                   | D Clamp the horn lead to the inner fork tube 70 mm from the under bracket.  |
| ⑤ Thermo switch          | E When connecting the horn lead, make sure that the lead points downwards from the connector so that water cannot get inside when it rains. |
| ⑥ Headlight coupler      | F Clamp the wire harness to the cowling stay.   |
| ⑦ Cowling stay           |   |
| ⑧ Heater relay           |   |
| ⑨ Relay unit             |   |
| ⑩ Flasher relay          |   |
| ⑪ Hazard relay           |   |



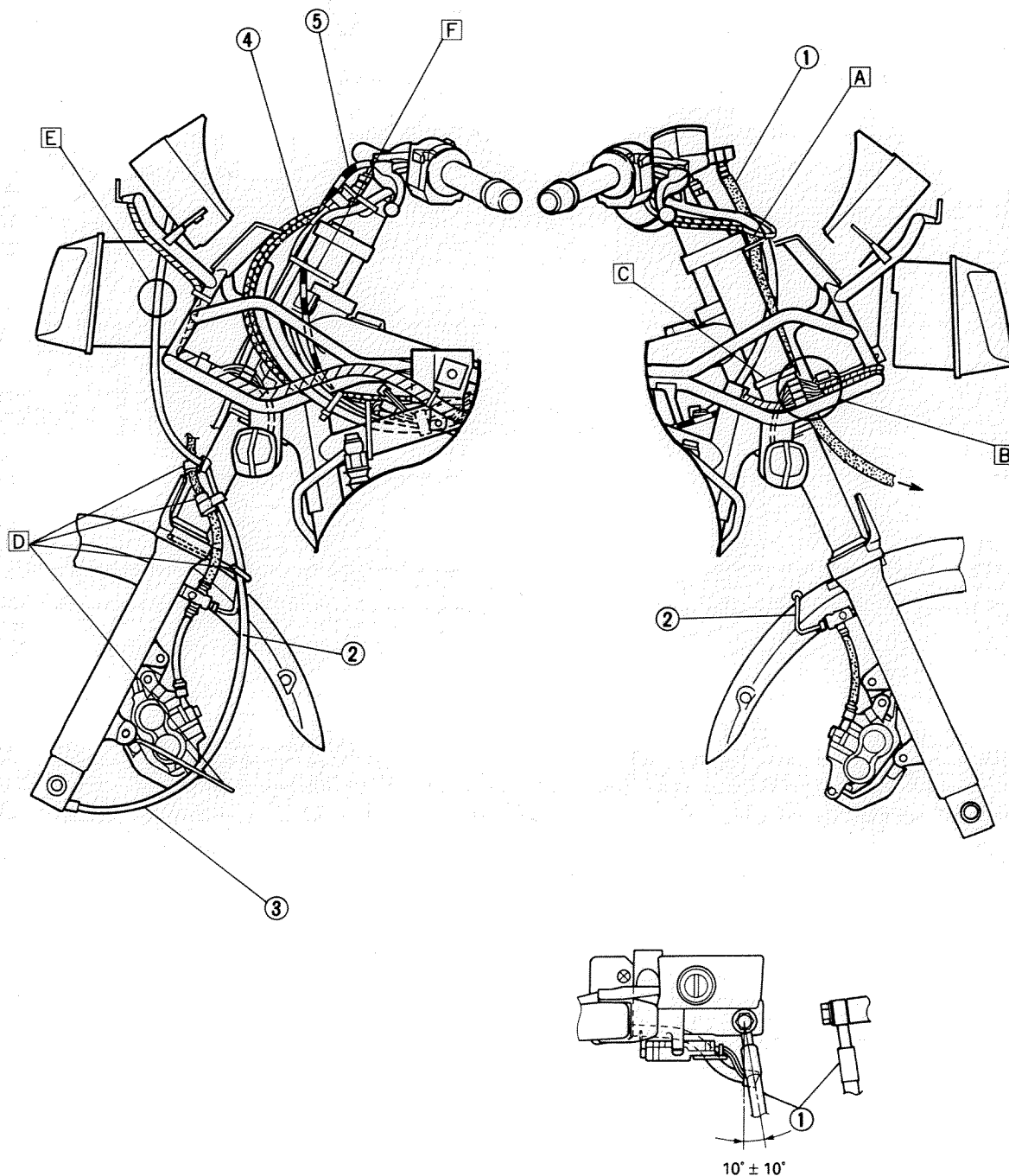
# CABLE ROUTING

SPEC

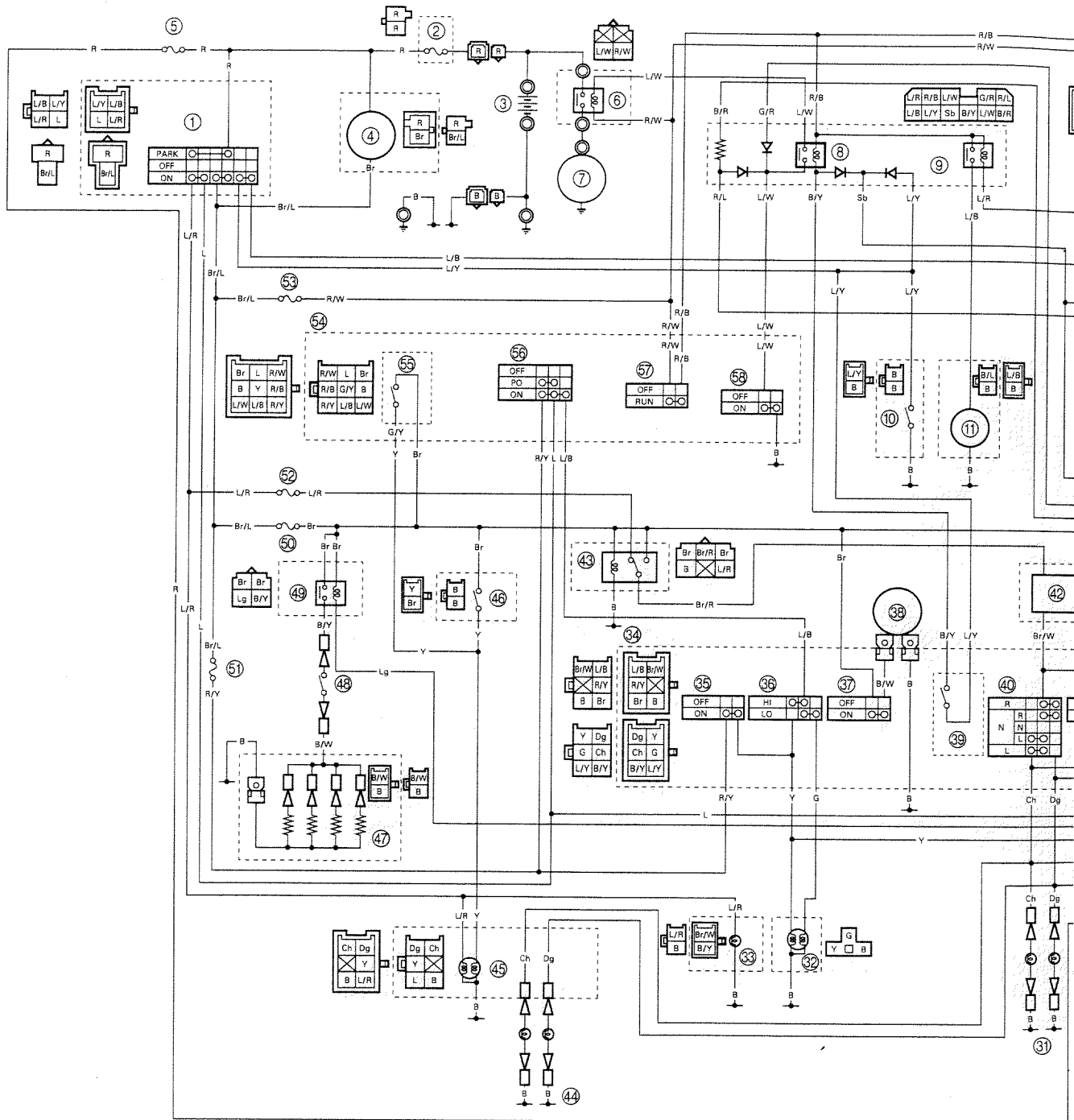


- ① Brake hose
- ② Brake pipe
- ③ Speedometer cable
- ④ Throttle cables
- ⑤ Clutch cable

- A Clamp the brake hoses to the guide wire.
- B After connecting the left and right flasher leads, clamp them to the cowl- ing stay. Connect the thermo switch lead to the plug with white tape affixed to it.
- C Clamp the brake hoses to the inner tube.
- D Pass the speedometer cable to the left of the headlight and pass it through the guide wire which secures the cowl- ing stay guide wire, brake hose holder, fender bracket guide wire and caliper.
- E When installing the cowl- ing, make sure that the speedometer cable is not pinched between the headlight and the cowl- ing.
- F Clamp the left handlebar switch lead to the inner tube.



## XJ900S '97 WIRING DIAGRAM (For Europe)



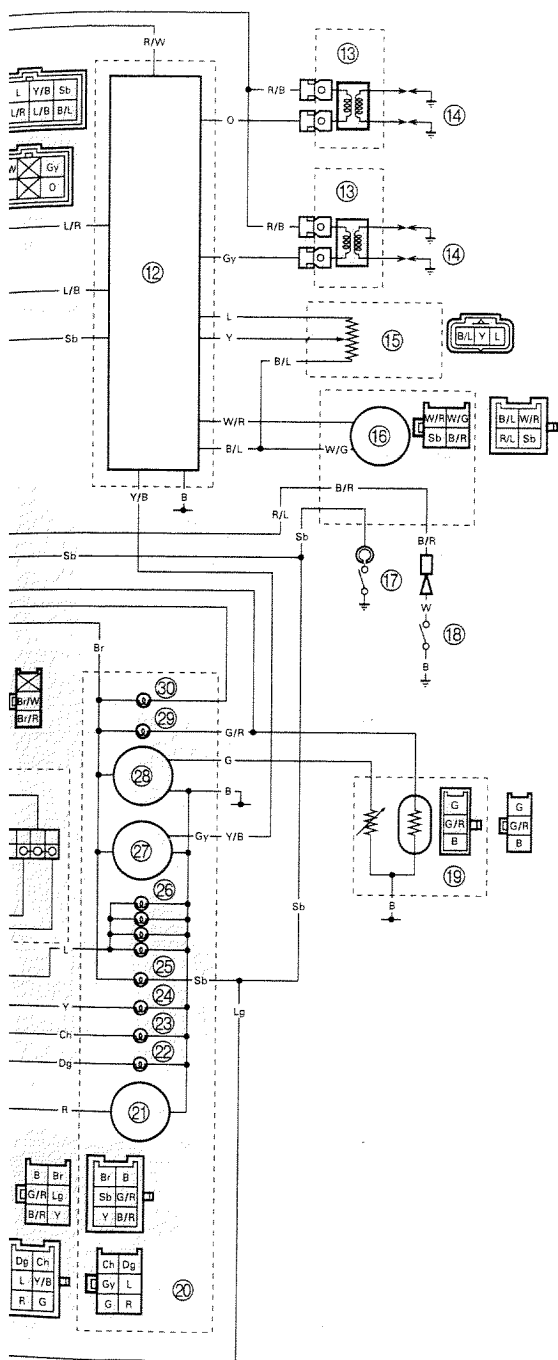
### COLOR CODE

B..... Black  
Br..... Brown  
Ch..... Chocolate  
Dg..... Dark green  
G..... Green  
Gy..... Gray  
L..... Blue  
Lg..... Light green

O..... Orange  
R..... Red  
Sb..... Sky blue  
Y..... Yellow  
B/L..... Black/Blue  
B/R..... Black/Red  
B/W ..... Black/White  
B/Y..... Black/Yellow

Br/L..... Brown/Blue  
Br/W..... Brown/White  
G/R ..... Green/Red  
G/Y ..... Green/Yellow  
L/B ..... Blue/Black  
L/R ..... Blue/Red  
L/W ..... Blue/White  
L/Y ..... Blue/Yellow

R/B.....Red/  
R/L.....Red/  
R/W .....Red/  
R/Y.....Red/  
Y/R.....Yello  
W/G .....Whit  
W/R .....Whit  
Y/B.....Yello



- ① Main switch
- ② Fuse (main)
- ③ Battery
- ④ A.C. generator
- ⑤ Fuse (clock)
- ⑥ Starter relay
- ⑦ Starter motor
- ⑧ Starter circuit cut-off relay
- ⑨ Fuel pump relay
- ⑩ Sidestand switch
- ⑪ Fuel pump
- ⑫ Ignitor unit
- ⑬ Ignition coil
- ⑭ Spark plug
- ⑮ Throttle sensor
- ⑯ Pickup coil
- ⑰ Neutral switch
- ⑱ Oil level switch
- ⑲ Fuel sensor
- ⑳ Meter assembly
- ㉑ Clock
- ㉒ Turn indicator light (right)
- ㉓ Turn indicator light (left)
- ㉔ High beam indicator light
- ㉕ Neutral indicator light
- ㉖ Meter light
- ㉗ Tachometer
- ㉘ Fuel level meter
- ㉙ Fuel level indicator light
- ㉚ Oil level indicator light
- ㉛ Front flasher light
- ㉜ Headlight
- ㉝ Auxiliary light
- ㉞ Handlebar switch (left)
- ㉟ Pass switch
- ㊱ Dimmer switch
- ㊲ Horn switch
- ㊳ Horn
- ㊴ Clutch switch
- ㊵ Turn switch
- ㊶ Hazard switch
- ㊷ Flasher relay
- ㊸ Hazard relay
- ㊹ Rear flasher light
- ㊺ Tail/brake light
- ㊻ Rear brake switch
- ㊼ Carburetor heater
- ㊽ Thermo switch
- ㊾ Heater relay
- ㊿ Fuse (signal)
- 1 Fuse (head)
- 2 Fuse (hazard)
- 3 Fuse (ignition)
- 4 Handlebar switch (right)
- 5 Front brake switch
- 6 Lights switch
- 7 Engine stop switch
- 8 Start switch

ck  
e  
ite  
low  
Red  
reen  
ed  
Black